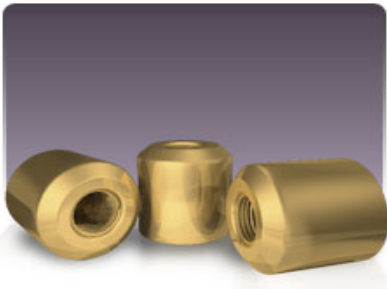


CONTACT Diecast Solutions for all of your Shot End Components

Sleeves, Beryllium Copper Tips, Steel Tips, Rods, Couplings, Goosenecks



- Quick delivery and Competitively Priced
- Environmental Responsibility
- HM-10, HM-20, Opti-Therm
- Stocking one of the industry's widest selections of plunger tips including custom sizes and industry standards, in addition to ready to ship machined stock tips of 2" through 5" diameter by 4" long in 1/8" increments, with 1/16" additional stock for finish machining to size by customers. These are available in 1½ - 12, and in most cases, 1½ - 12 threads, in HM-10 and HM-20 alloys.

www.hildrethmfg.com

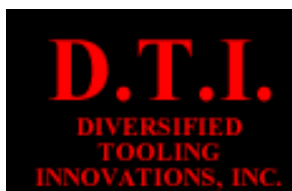


Servicing all of your Hot and Cold Chamber needs

Cold Chamber · Hot Chamber · Techmire Machines · Deep Hole Drilling

- Shot Rods - both one hole and two hole
- Brach Quick Change Coupling (Decrease your set-up time)
- Goosenecks, Nozzles, Plungers, etc
- Four Slide Parts
- Order your rods online

www.brachmachine.com



SHOT SLEEVES

- Ranging up to 3500T
- Manufactured, Nitrided and Heat Treated to YOUR spec
- Regular H-13, Premium H-13
- Unparalleled quality at competitive prices
- Full Service Machine shop to
- Completely Re-condition your sleeves
- Re-hone up to 10" by 10'

www.diversifiedtooling.com



CONTACT: Diecast Solutions www.diecast-solutions.com
Mark Schnur cell 704-608-0078 mschnur@diecast-solutions.com
David Thomas cell 256-710-2606 dthomas@diecast-solutions.com